



Glamour CRAFTS

How to make a Step Easel Card



PROJECT SUPPLIES

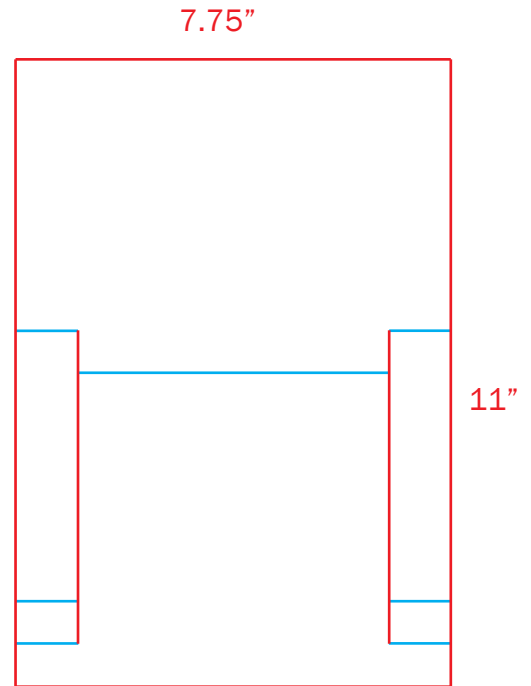
- Gemini Machine or any other Cutting Machine
- The Ultimate Tool or any other scoring tool
- Floral Vine Edge'able*, Flutter Away, Cottage Window, Lazy Daisy and Happy Birthday Metal Die
- One piece of white 8.5" x 11" Cardstock for template + other colors.
- Glue (Extra Strong Permanent Tape Runner)
- Embellishments

* You can use any edge'able metal die.

Directions

Step one: Print template directly on cardstock that you are going to use for your project, then cut on red lines.

Make sure to print the template on 8.5" x 11" paper size.
Do not re-size template.



Step two: Cutting: Stack you plates in the following order

- 1) Base Cutting Plate
- 2) Clear Cutting Plate
- 3) Magnetic Shim
- 4) Graph Paper template
- 5) Place metal dies on the graph paper template (make sure the largest metal dies cutting edge is on the the coring line as show on image 1
- 6) Place cardstock that you cut out on the graph paper template, line edges of cardstock up with lines on graph paper see image 2.
- 6) Plastic Shim

Now run your sandwich through the Gemini.

IMAGE 1

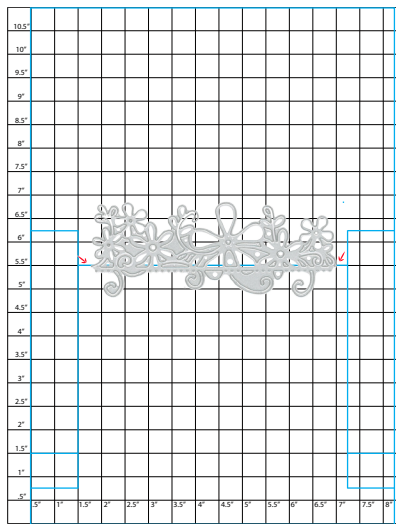
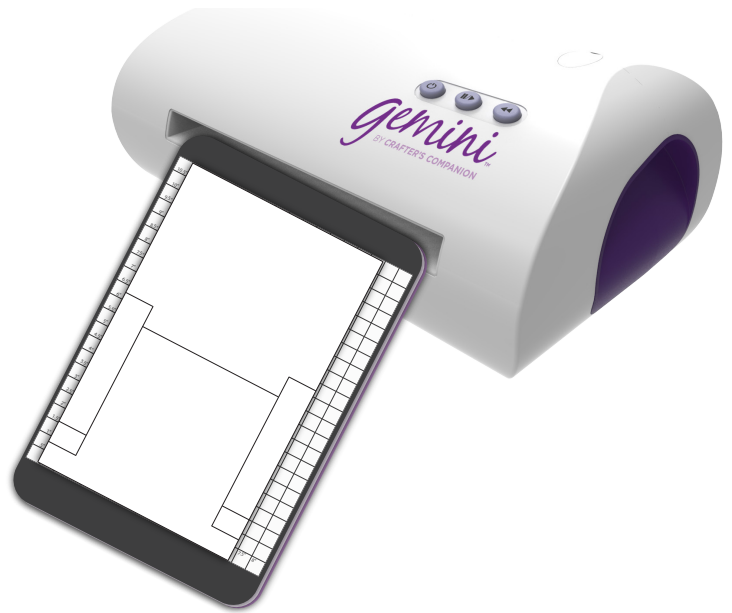
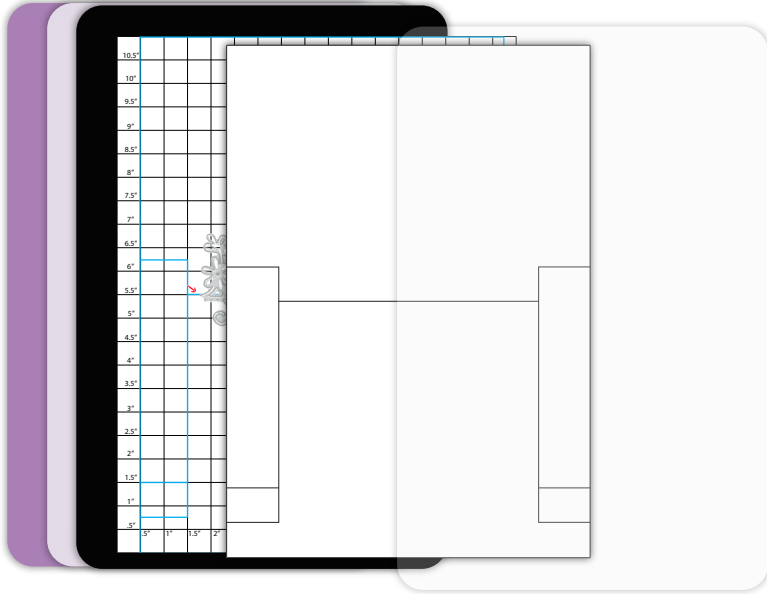
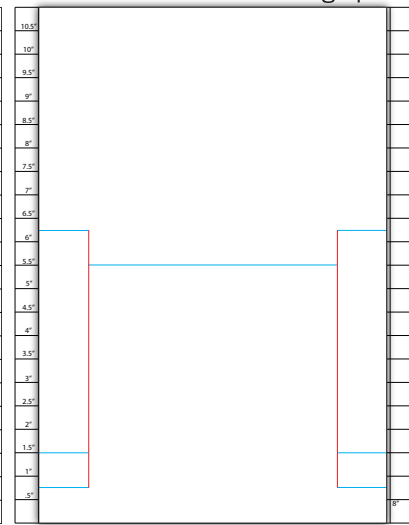


IMAGE 2 Score lines facing up

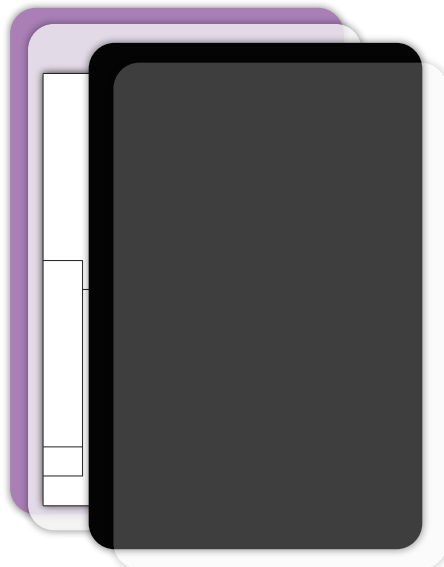


Run sandwich through the Gemini.

Step three: Embossing: Remove the Magnetic Shim and the Graph Paper template carefully without moving the dies from the cardstock, next place the Rubber Mat on top of the cardstock then the Plastic Shim as shown on image 3.

- 1) Base Cutting Plate
- 2) Clear Cutting Plate
- 3) Graph Paper
- 4) Metal Dies
- 5) Cardstock
- 6) Rubber Embossing Mat
- 7) Plastic Shim

IMAGE 3



Step four: Remove dies from cardstock, then use The Ultimate Tool or any other scoring board to score on the blu lines, now your favor box is ready to decorate.